

Word of the Day

Spring Term 2025

Week 26 – 17th March 2025



'Words unlock the doors to a world of understanding...'

This Week's Words

Grasshopper

croak

discover

tight

notice

wise

Shinobi

digest

crooked

adjacent

apologise

unique



VOCABULARY NINJA

Grasshopper (Tier 1)

croak

discover

tight

notice

wise



VOCABULARY NINJA

Shinobi (Tier 2)

digest

crooked

adjacent

apologise

unique



VOCABULARY NINJA



Grasshopper Word of the Day

Word of the Day:

Pronunciation / Syllables

croak
(croak)

Word Class
(verb / noun)

Definition:

If someone croaks something, they say it in a low, rough voice.



Gill tried to answer, but only a hoarse **croak** came out

Synonym:

squark

crow

Antonym:

Prefix / Suffix:

-ed

-ing

Rhyme:

broke

oak

Link Word:

loudly

weakly



Grasshopper Word of the Day

Word of the Day:

discover
(dis-co-ver)

Word Class
(verb)

Pronunciation / Syllables

Definition:

If you discover something that you did not know about before, you become aware of it or learn of it.



Jo was eager to **discover** the answer.

Synonym:

detect

identify

Antonym:

hide

neglect

Prefix / Suffix:

re-

-y

Rhyme:

recover

uncover

Link Word:

accidentally

quickly



Grasshopper Word of the Day

Word of the Day:

Pronunciation / Syllables

tight
(tight)

Word Class
(adjective / adverb)

Definition:

If you hold someone or something tight, you hold them firmly and securely.



Sonny held his pencil **tight** while writing the test.

Synonym:

tight

taut

Antonym:

loose

slack

Prefix / Suffix:

-ly

-ness

Rhyme:

bright

light

Link Word:

very

perfectly



Grasshopper Word of the Day

Word of the Day:

Pronunciation / Syllables

notice
(no-tice)

Word Class
(verb)

Definition:

If you notice something or someone,
you become aware of them.



Mr Li told the class to **notice** the important details.

Synonym:

attention

note

Antonym:

disregard

neglect

Prefix / Suffix:

-ed

-able

Rhyme:

lotus

Link Word:

hardly

quickly



Grasshopper Word of the Day

Word of the Day:

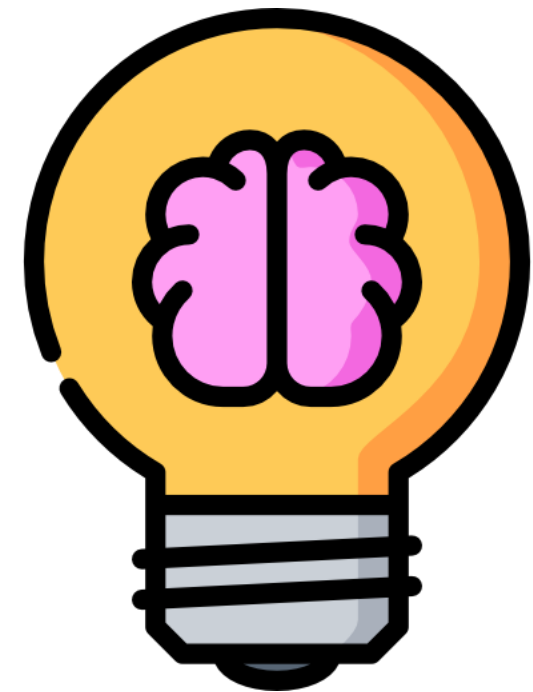
Pronunciation / Syllables

wise
(wise)

Word Class
(adjective)

Definition:

A wise person is able to use their experience and knowledge in order to make sensible decisions and judgements.



Mrs Peters gave a **wise** answer to Kaylie's question.

Synonym:

enlightened
prudent

Antonym:

foolish
unaware

Prefix / Suffix:

un-
-ly

Rhyme:

eyes
size

Link Word:

truly
sound



Shinobi Word of the Day

Word of the Day:

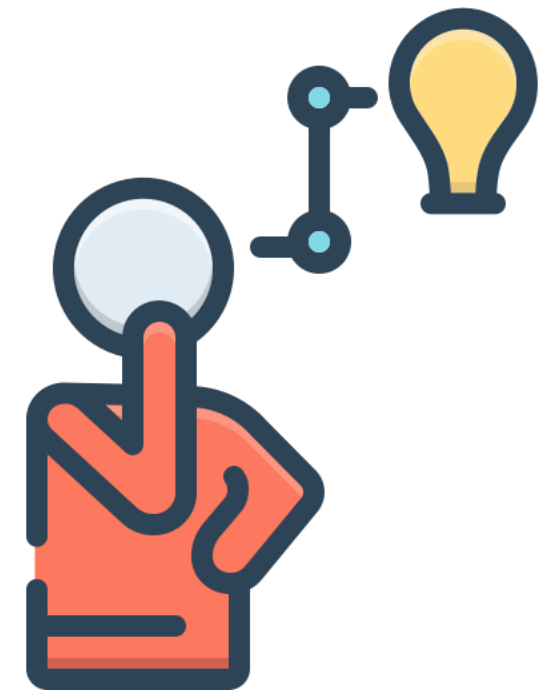
Pronunciation / Syllables

digest
(di-gest)

Word Class
(verb)

Definition:

If you digest information, you think about it carefully so that you understand it.



The class took a moment to **digest** the new lesson.

Synonym:

absorb
consider

Antonym:

discard
neglect

Prefix / Suffix:

-ion
-ive

Rhyme:

best
test

Link Word:

slowly
fully



Shinobi Word of the Day

Word of the Day:

crooked
(*crook-ed*)

Word Class
(adjective)

Pronunciation / Syllables

Definition:

If you describe something as crooked, especially something that is usually straight, you mean that it is bent or twisted.



Ms Frank noticed the poster looked **crooked** on the wall.

Synonym:

bent

twisted

Antonym:

straight

unbent

Prefix / Suffix

-ness

-est

Rhyme:

Link Word:

visibly

slightly



Shinobi Word of the Day

Word of the Day:

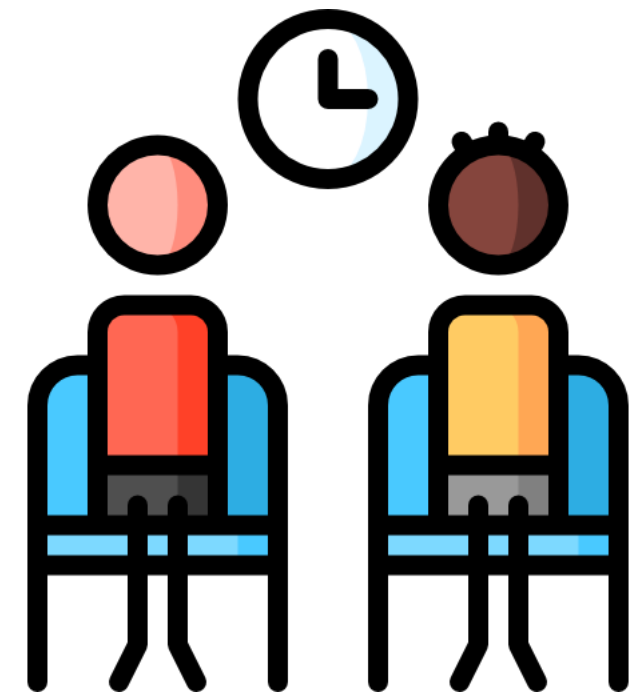
adjacent
(ad-ja-cent)

Word Class
(adjective)

Pronunciation / Syllables

Definition:

If one thing is adjacent to another, the two things are next to each other.



Sam and Nila sat in **adjacent** seats during the test.

Synonym:

adjoining
bordering

Antonym:

divided
separate

Prefix / Suffix:

non-
-ly

Rhyme:

complacent

Link Word:

remain
physically



Shinobi Word of the Day

Word Class
(verb)

Word of the Day:

apologise
(a-pol-o-gise)

Pronunciation / Syllables

Definition:

When you apologise to someone, you say that you are sorry that you have hurt them or caused trouble for them.



Cam **apologised** for forgetting his homework.

Synonym:

atone

retract

Antonym:

defy

Prefix / Suffix:

-ed

-ing

Rhyme:

Link Word:

formally

quickly



Shinobi Word of the Day

Word of the Day:

Pronunciation / Syllables

unique
(u-nique)

Word Class
(adjective)

Definition:

Something that is unique is the only one of its kind.



Each student's answer was **unique** and creative.

Synonym:

different

rare

Antonym:

common

usual

Prefix / Suffix:

non-

-ly

Rhyme:

week

speak

Link Word:

truly

incredibly

Vocabulary Laboratory



Describe / Definition:

Use it in a sentence:

Focus Word (write below):

Word Class:

Synonyms:

(words with same / similar meaning)

Antonyms:

(words with opposite meaning)

Draw your sentence:

Rhymes:

(words that sound the same)

Link Words:

(Example: football = pitch, team, player)

Vocabulary Visualiser

Draw the
Grasshopper words
and bring them to life.



Word: discover

Word: notice

Word: tight

Word: wise



Vocabulary Visualiser

Draw the **Shinobi**
words and bring
them to life.



Word: crooked

Word: apologise

Word: adjacent

Word: unique



Matching Meanings

Draw lines from the **Grasshopper** words to their definitions.

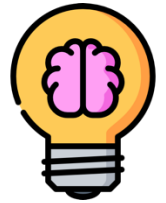


Grasshopper Word

Grasshopper Definitions

croak

A *** person is able to use their experience and knowledge in order to make sensible decisions and judgments.



discover

If someone *** something, they say it in a low, rough voice.



tight

If you *** something or someone, you become aware of them.



notice

If you *** something that you did not know about before, you become aware of it or learn of it.



wise

If you hold someone or something ***, you hold them firmly and securely.



Matching Meanings

Draw lines from the **Shinobi** words to their definitions.



Shinobi Word

Shinobi Definitions

digest

If one thing is *** to another, the two things are next to each other.



crooked

If you describe something as ***, especially something that is usually straight, you mean that it is bent or twisted.



adjacent

When you *** to someone, you say that you are sorry that you have hurt them or caused trouble for them.



apologise

Something that is *** is the only one of its kind.



unique

If you *** information, you think about it carefully so that you understand it.





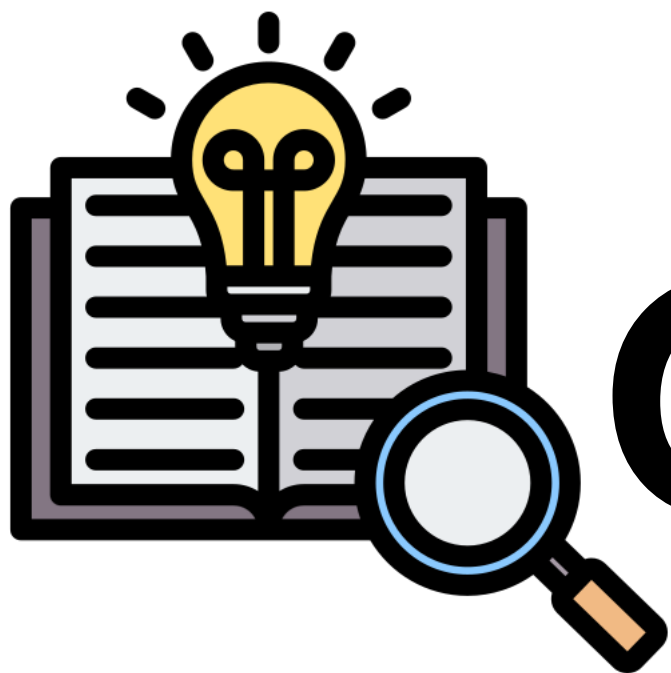
Display Slips

The following slides are for classroom display. As you teach each Word of the Day, words can be displayed in the classroom to enable pupils to use the taught vocabulary in an independent manner.





croak

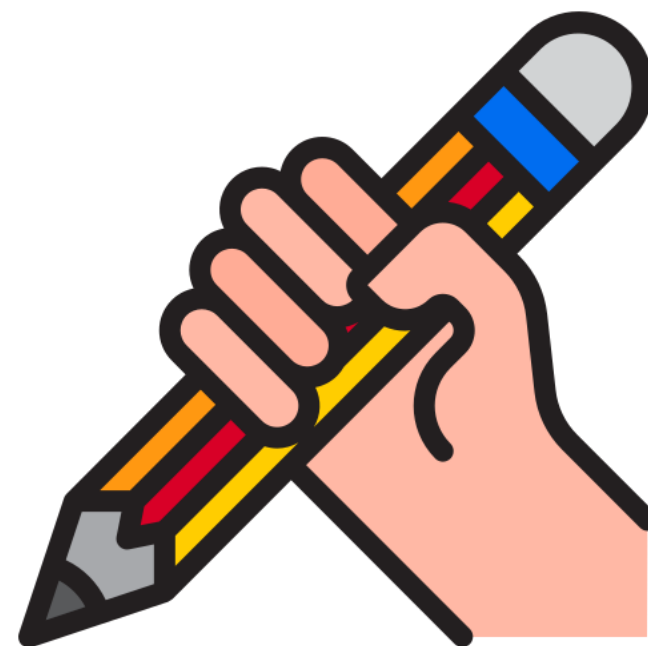


discover





tight

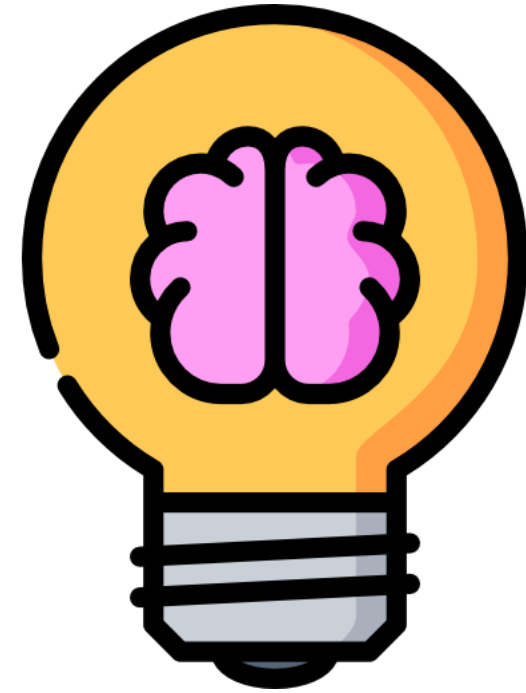


notice





wise

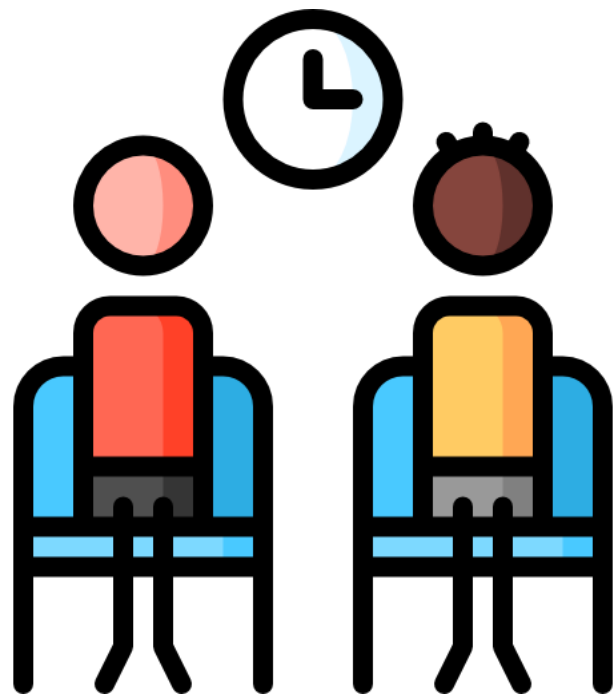


digest





crooked



adjacent





apologise



unique





Font Variation

The following display slips contain the same words, but have a more regular font, which have a more regular formation of 'a' and 'g'. Futura is the name of the font.




worried



opini

asure

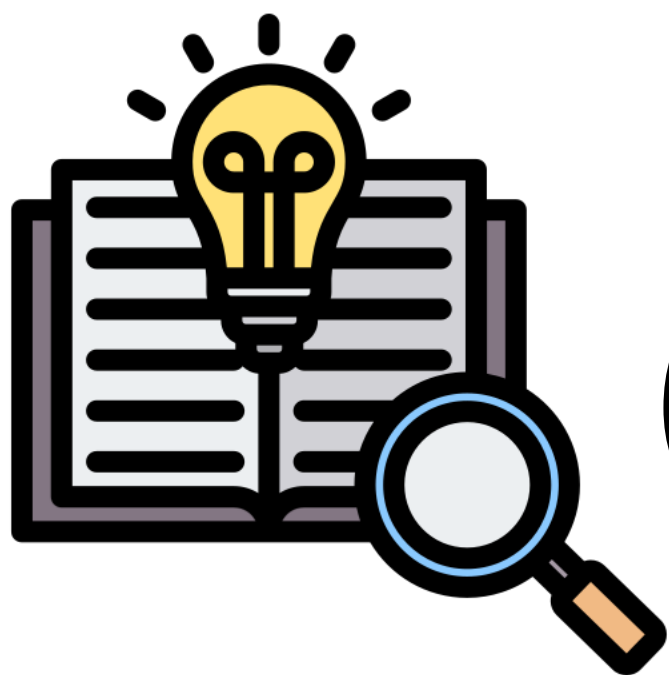


di





croak

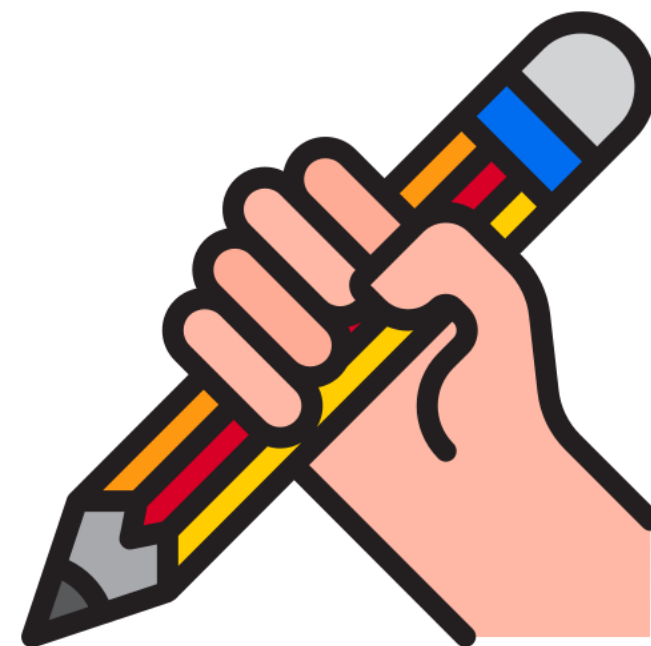


discover





tight

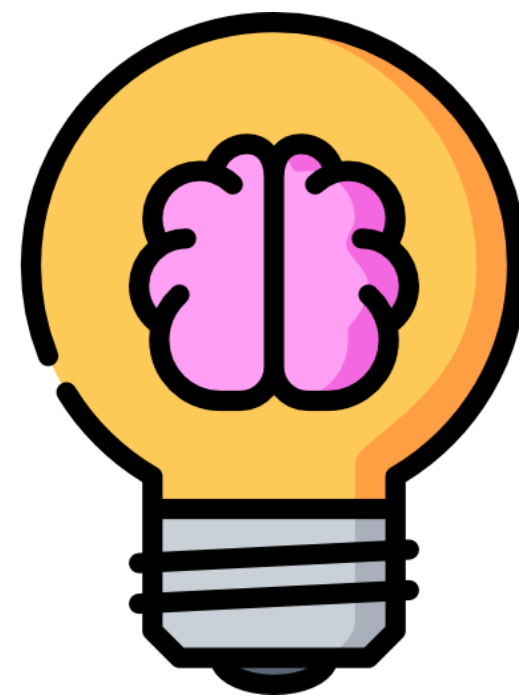


notice





wise

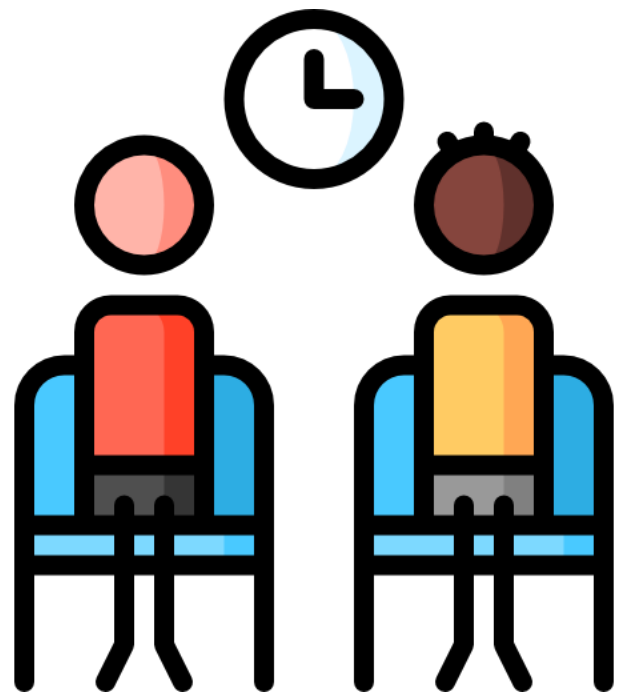


digest





crooked



adjacent





apologise



unique

